

## A PIECE OF CAKE

17 1/2" X 51 "

Courtesy of The Quilting Connection  
8741 Oakwood Dr.  
Boones Mill, VA 24065  
540-776-0794  
[www.quiltingconnect.com](http://www.quiltingconnect.com)

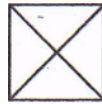
### Supplies:

Floral - 7/8 yd

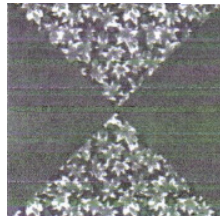
Contrast - 7/8 yd (includes binding)

Background - 1/2 yd

Cut a 9 1/4" strip from floral and contrast fabrics, re-cut into (2) 9 1/4" squares. Cut the squares diagonally twice.



Referring to quilt diagram sew the triangles together, press towards darkest triangle. Join units in the center to form quarter-triangle units.



Cut (1) 12 5/8" strip from background, re-cut into (2) 12 5/8" squares, cut squares diagonally as you did above. Referring to quilt layout sew triangles together with quarter-square units and connect the rows.

Border - Cut (4) 3 1/2 " strips. Binding - Cut (4) 2 1/2" strips. Quilt as desired. Enjoy! This quick and easy table runner would be perfect for gifts.

